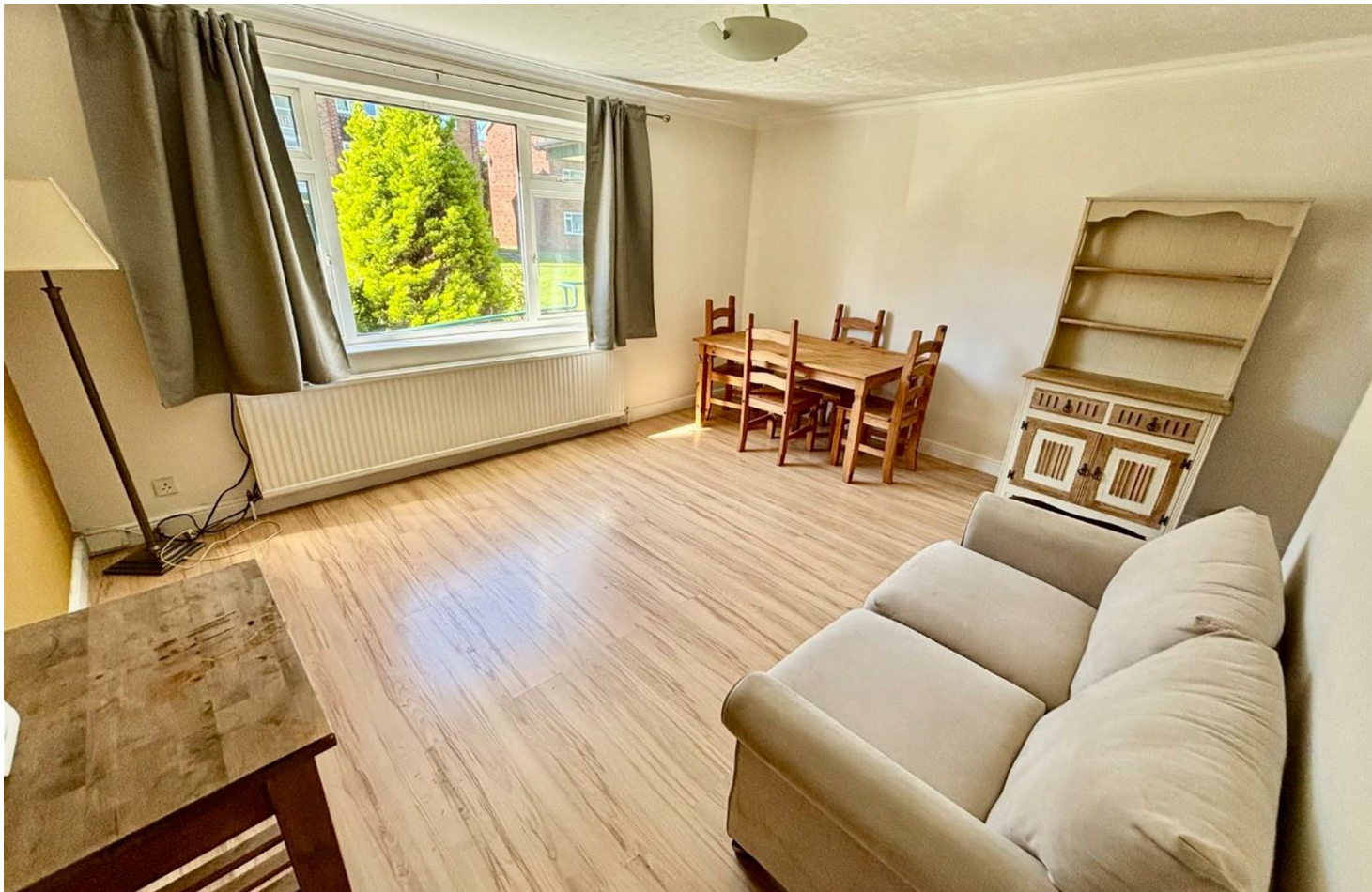




jordan fishwick

WEST DIDSBURY
Barlow Moor Court



Barlow Moor Court, West Didsbury, M20 2UX

£230,000



The Property

Barlow Moor Court is a select purpose built development located adjacent to West Didsbury's vibrant Burton Road and all the shops, bars and restaurants it has to offer. The Metrolink is only a short stroll away, yet the development remains peacefully tucked away among its lovely gardens and grounds. This apartment enjoys a ground floor position, giving easy access to the communal gardens at the front and rear. 676 sqft. Inside, the accommodation is thoughtfully laid out allowing for bright, spacious rooms comprising: Entrance hallway, large living room, fitted kitchen, and off the inner hallway are two double bedrooms and bathroom. The property is well presented throughout and benefits from gas central heating and double glazing. The property benefits from ownership of a parking space in one of the residential car parks, while the communal gardens and grounds are evidently well cared for and maintained. Ideal for first time buyers and investors. Viewing Recommended. *NO ONWARD CHAIN*

Directions

M20 2UX



- Two double bedrooms
- Ground floor
- West Didsbury location
- Allocated parking space
- Communal gardens
- Fitted separate kitchen
- Close to Burton Road and Metrolink
- Gas central heating
- Double glazed throughout
- No onward chain

Postcode - M20 2UX

EPC Rating - C

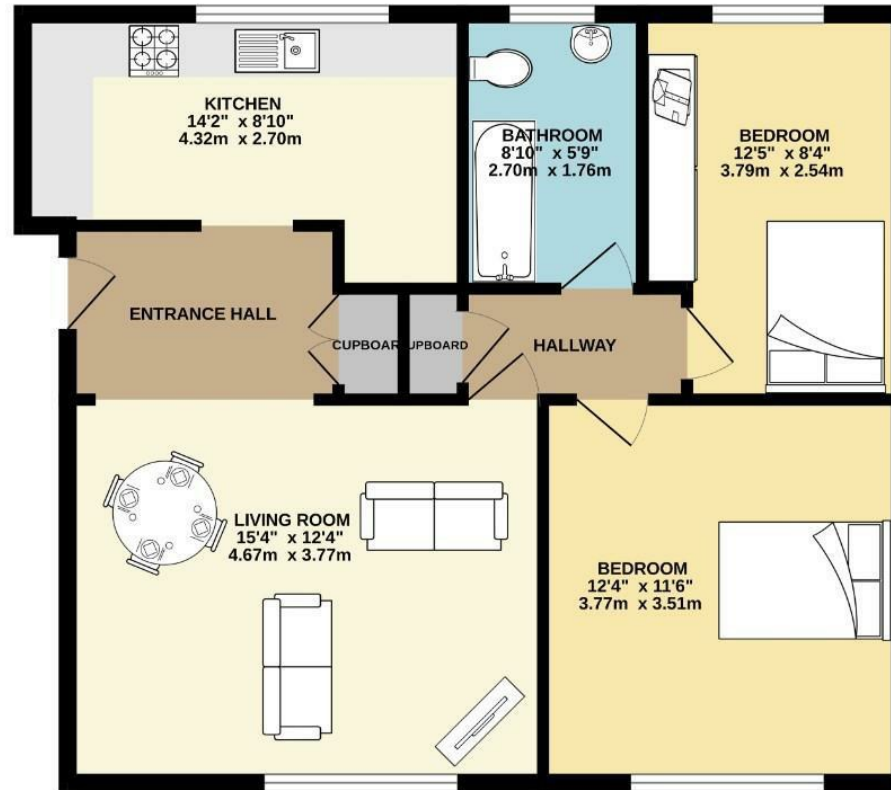
Floor Area - 676.00 sq ft

Local Authority - Manchester City Council

Council Tax - B



GROUND FLOOR
676 sq.ft. (62.8 sq.m.) approx.



TOTAL FLOOR AREA : 676 sq.ft. (62.8 sq.m.) approx.
Measurements are approximate. Not to scale. Illustrative purposes only.
Made with Metropax ©2026



These particulars are believed to be accurate but they are not guaranteed and do not form a contract. Neither Jordan Fishwick nor the vendor or lessor accept any responsibility in respect of these particulars, which are not intended to be statements or representations of fact and any intending purchaser or lessee must satisfy himself by inspection or otherwise as to the correctness of each of the statements contained in these particulars. Any floorplans on this brochure are for illustrative purposes only and are not necessarily to scale.

Offices also at: Wilmslow, Macclesfield, Hale, Sale, Chorlton, Glossop, Manchester & Salford

757-759 Wilmslow Road, Didsbury Village, Manchester

0161 445 4480

didsbury@jordanfishwick.co.uk
www.jordanfishwick.co.uk